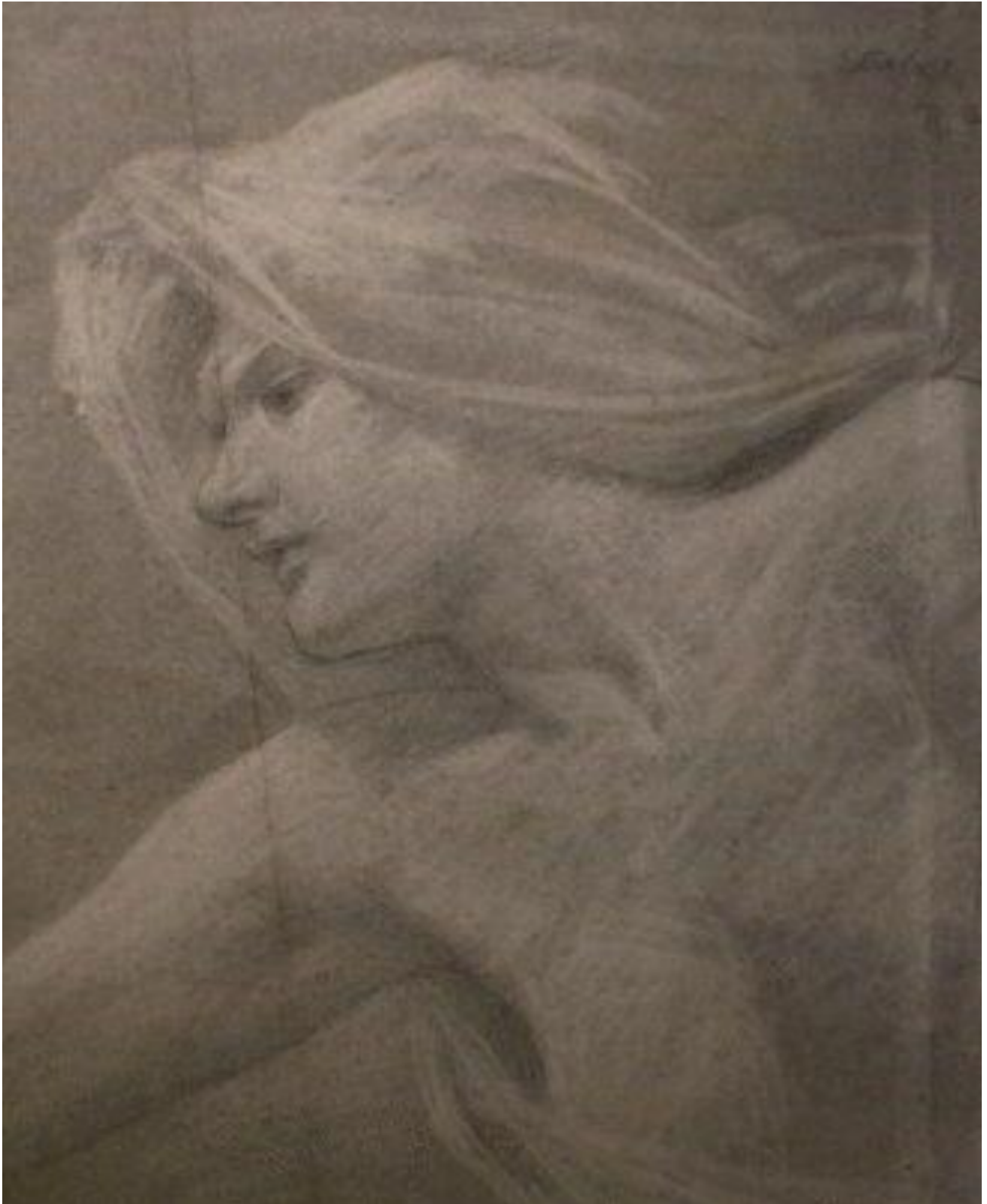


SARAH COLEGRAVE  
FINE ART

Head of a Girl

Robert Fowler

Sold



REF: 61403

Height: 81.28 cm (32")

Width: 64.77 cm (25.5")

## Description

Born in Anstruther, Fifeshire, Fowler first worked as an architect's apprentice before studying at Liverpool College of Art and in London at Heatherley's and the Royal Academy Schools. Due to health problems he was forced to withdraw from the Academy Schools and after a period of rest in Yorkshire, worked as an artist in Liverpool being a regular exhibitor at the Liverpool Autumn Exhibitions from 1875. He exhibited also at the Royal Academy 1876-1903 and at many other venues. He painted figurative and mythological subjects showing the influence of Albert Moore and Japanese art. From about 1902 he increasingly painted landscapes, particularly of the North Wales coast. In 1904 he moved to London.